

# BELT SCALE WORKSHEET

This worksheet is required for quotations and is needed before orders can be processed.  
Please fill out a photocopy and fax to Arch Environmental Equipment at 800-230-9462.

Company: \_\_\_\_\_ Date: \_\_\_\_\_

Address: \_\_\_\_\_

City: \_\_\_\_\_ State: \_\_\_\_\_ Zip: \_\_\_\_\_

Phone: \_\_\_\_\_ Fax: \_\_\_\_\_

Contact: \_\_\_\_\_ Project: \_\_\_\_\_

## Conveyor Data (Conveyor Number: \_\_\_\_\_)

Material Conveyed: \_\_\_\_\_ Operational Temperature Range: \_\_\_\_\_

Material Type:  Wet  Dry What Operation is Taking Place?  Mining  Plastics  Timber  Other

Material Density: \_\_\_\_\_ (weight per cubic foot - approximate) \_\_\_\_\_

Belt Width: \_\_\_\_\_ Belt Type (Brand/Model): \_\_\_\_\_

Belt Speed: \_\_\_\_\_  Fixed  Variable Belt Length: \_\_\_\_\_

Tons per Hour: Max \_\_\_\_\_  Long  Short  Metric

Conveyor Angle or Rise per Foot: \_\_\_\_\_ Take-Up Type: \_\_\_\_\_

Power Available at Installation Point:  115 VAC  220 VAC  50 HZ  60 HZ

Optional Signal Output 4-20 mA, Pulse: \_\_\_\_\_ Enclosure:  NEMA 9  NEMA 12

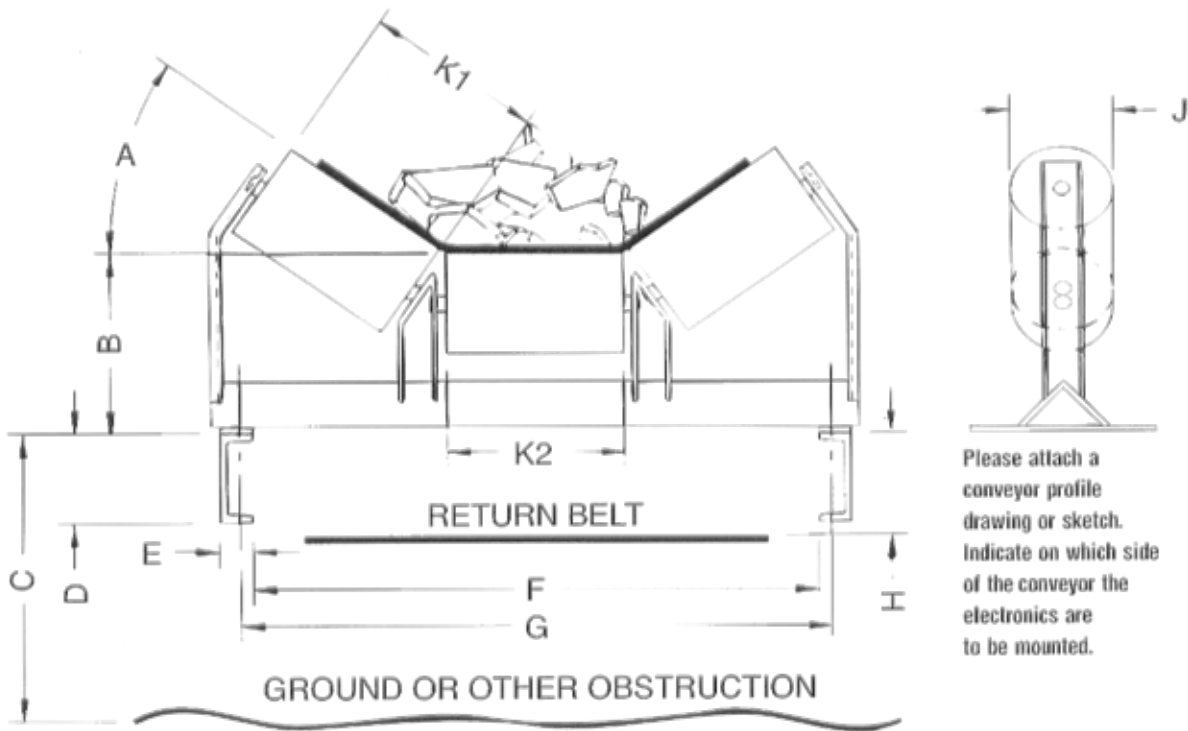
Spacing Between Idlers in Scale Area: \_\_\_\_\_ Factory Modified

Distance Between Scale & Integrator: \_\_\_\_\_

Is Conveyor Designed to Move or Shift in Any Way? \_\_\_ Yes \_\_\_ No If So, How \_\_\_\_\_

# BELT SCALE WORKSHEET

(Continued) Page 2



Please attach a conveyor profile drawing or sketch. Indicate on which side of the conveyor the electronics are to be mounted.

**Idler Type:**

- Troughing
- Picking/Feeder
- Rigid Mine
- Wire Rope
- Catenary

**Scale Placement:**

- Above Ground
- Below Ground

**Options:**

- Remote Display
- Chart Recorder
- Graphic Remote
- HP Scale (1/2% acc.)
- SC Scale (1-2% acc.)
- PC Software Package
- LD Display
- Large Display

A) Troughing Angle: \_\_\_\_\_

G) Bolt Hole Centers: \_\_\_\_\_

Special Operation Conditions:

B) Center Roll Height: \_\_\_\_\_

H) Clearance to Belt: \_\_\_\_\_

\_\_\_\_\_

C) Ground Clearance: \_\_\_\_\_

J) Roller Diameter: \_\_\_\_\_

\_\_\_\_\_

D) Stringer Height: \_\_\_\_\_

CEMA Rating: \_\_\_\_\_

\_\_\_\_\_

E) Flange Width: \_\_\_\_\_

K1) Wing Roll Length: \_\_\_\_\_

\_\_\_\_\_

F) Structure Clearance: \_\_\_\_\_

K2) Center Roll Length: \_\_\_\_\_

\_\_\_\_\_

Idler Manufacturer: \_\_\_\_\_

\_\_\_\_\_